



EARTHWAYS CENTER

a division of the  MISSOURI BOTANICAL GARDEN

We promote sustainability through environmental education and improving the built environment.

Vol. 2, No. 2 – April/June 2007



EWC's Jean Ponzi recently gave a tour to [Cupman](#) (photo at left), who was touring Green sites around the U.S. for "Planet Smoothie" products. Photo of Cupman by Kate Ponzi.

Happy Earth Day from EarthWays Center! April is "Earth Month" for everyone engaged in the kind of work we do here at EWC: educating about many ways to live sustainably. Environmental interest raised by Earth Day, April 22, expands to pack the weeks before and after this international day of Green awareness and action. This is one of our busiest times of the year!

Media calls also keep us on the go. EWC resources are in demand from local to national print and electronic media outlets, including recent coverage in "Town and Country," the National Association of Home Builders Research Center, "Sauce" magazine, the Springfield MO's Springfield News-Leader, the St. Louis Post-Dispatch, KDNL-Channel 11 News and the Columbia, MO "Tribune."

[Visit us online](#) for more information on our programs and projects.

EarthWays Provides Sustainability Education

EWC's education programs explore sustainability, through the investigation of energy efficiency and conservation, renewable energy sources, solid waste reduction and recycling, green building, water conservation and air quality.

EarthWays Center will have resources for Green Home building and renovation, energy conservation and recycling at these Earth Day public venues. Please check us out – along with the other features of these events:



EWC Docent Donovan Larson helps a family feel the power of energy efficiency, on our Energy Bike.

Earth Day at the Garden • Missouri Botanical Garden Saturday, April 21 • 10 a.m. to 3 p.m.

Learn what you can do to conserve local and planetary resources from the environmental organizations of Earth Share of Missouri. Also enjoy bluegrass music by the Flying Mules (1 to 3 p.m.) and take a special behind-the-scenes tour of MBG greenhouses (10 a.m., Noon, 2 p.m.). *Special offer at this event:* Bring you old cell phones for recycling!

St. Louis Post-Dispatch "Lifestyle" • Saturday April 21

Tips and trends for giving Green parties, and generally sprucing up everyday Green practices will fill this edition of the Post's weekend magazine, including ideas from EarthWays Center.

St. Louis Earth Day Festival • Forest Park • Sunday April 22 • 11 a.m. to 6 p.m.

The region's largest free Earth Day event showcases 100+ exhibitors and vendors with informative and stylish wares around the tree-shaded grounds of the Muny Opera. Treat yourself to local, organic and natural foods – some grown and sold by local farmers – and boogie all day to bands on two stages. Extras: Come by at 8:30 a.m. to help the Open Space Council clean up Forest Park streams, and bring your old computers and other electronic waste to be recycled, on the grounds of St. Louis Community College-Forest Park. See www.stlouisearthday.org for more details on this festival and event listings for **Earth Day Around Town.**

St. Louis Earth Day is also one of the sponsors of the meeting of the Waters Symposium May 9-11. [Check it out!](#)

Public Tour Days at EarthWays Center • 3617 Grandel Square

Saturday & Sunday April 21-22 • tours at 11 a.m., noon, 1 and 2 p.m.

In addition to your tour, make up a bottle of "Clean-Air Cleaner," a non-toxic general purpose cleaner and view our new cable TV show "Detox Your Domicile." All adult visitors from our region can enter a free raffle to win a two-hour whole building audit from our Home Performance with ENERGY STAR program and Chapala Consulting, Inc. – a \$200 value.



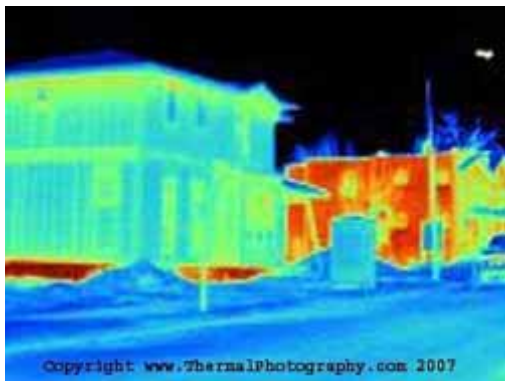
EarthWays Center Professional Development Workshop group. Photographer: Julia Feder

Teachers - Don't miss out on EWC's Sustainability Education Summer Professional Development Workshop! June 14-15, 2007 Using EWC as our home base, participants will explore ways to integrate our new Energy Efficiency Toolbox and other resources into their classroom investigations and curriculum. We will interact with experts assessing the impact of energy use on the environment, take field trips, and all teachers will receive their own Energy Efficiency Toolbox, including lesson plans that are correlated to the Missouri Show-Me Standards and Science Grade Level Expectations. **Best yet, the workshop is free for educators! Thanks to generous funding from AmerenUE.** For more information, contact Julia Feder at (314) 577-0281 or julia.feder@mobot.org.

Great Green Adventures • Saturdays, May-October, 11 a.m. to 2 p.m. • [Visit us online](#) for more information. Weeks 1, 2, and 4 at the Missouri Botanical Garden • Week 3 at one of the Garden's off-site locations Saturday, June 16: Great Green Adventures is at EarthWays! In addition to public tours, we'll offer *Be a Sustainability Superhero-Ready to Recycle*. Children ages 4-10 will play Trash Bag Relay and learn to Habit Dance!

EarthWays Improves the Built Environment

EWC programs focus on improving all aspects of our living and working environments.



Thermal imaging photo shows how this [Sage Home](#) conserves energy. No-heat-loss (blue) dominates the shot, even though the furnace was running and 150+ people were inside, compared to heat leakage (red-orange) from the house at right.

St. Louis hosted the National Association of Home Builders "Green Homes Conference" in late March. EarthWays Center was one of five area homes toured by over 200 Green Home promoters and builders from all over the U.S. We were proud to showcase systems and methods that were incorporated into our facility when it was rehabbed 14 years ago, which have become today's standards for Green Home Building. EWC staff members Glenda Abney and Jean Ponzi attended the conference, and Garden President Dr. Peter Raven delivered the Keynote Address.

U.S. Green Building Council - St. Louie Regional Chapter: In March, 18 St. Louis area building projects received a total of \$385,000 to help obtain LEED certification through the LEED Incentive Grant Program funded by AmerenUE and administered by USGBC-STL. Our region continues to grow green buildings!

Upcoming Programs at EarthWays Center



Camp EarthWays campers from 2006. Photographer: Glenda Abney

Camp EarthWays: Young Green Builders / Grades 5 –8
June 25–29, Mon. thru Fri. • 9:00 a.m. to 3:00 p.m.
at EarthWays Center

During this week long experience, campers will explore sustainable home design and learn about green building practices, while designing their fantasy - green - home. Meet experts and tour green homes and neighborhoods all using public transportation. Campers present their designs at the end of the week. Building on the green momentum this camp had last year, its sure to be a hit!

Instructor: Julia Feder, EWC Education Supervisor and guest leaders
Fee: \$150 Members, \$175 Non-members
To register for Young Green Builders, please call (314) 577-0220.

Adult Classes

Greening Your Home – No "Greenwashing" Allowed! • Saturday, May 5 • 9 a.m. to 1 p.m.

Looking to build or buy a new 'green' home? Come learn the basics of true green building. Pizza provided.

Instructor: Jean Ponzi, EWC Program Manager • **Fee:** \$10 MBG member, \$15 nonmember

Plastic Project: Jewelry • Tuesday, May 8 • 6:30 to 9 p.m.

By manufacturing beads and bangles from old #2 plastic containers, we'll create striking pieces of wearable art! Bring a utility knife and any jewelry making supplies you have.

Instructor: Katy Mike Smaistrila, EWC Education Coordinator • **Fee:** \$40 MBG member, \$45 nonmember

Clean, Green Energy Machines • Saturday, May 12 • 9 a.m. to 1 p.m. • meet at EarthWays.

Learn about developments in renewable energy sources like biodiesel and ethanol. Tour cutting edge energy projects in the St. Louis area. Lunch provided.

Instructor: Julia Feder, EWC Education Supervisor • **Fee:** \$15 MBG member, \$20 non-member

Re-Energy-ize Your Home! • **Monday, May 21 from 5 to 7 p.m. or Tuesday, June 12 from 6:30 to 8:30 p.m.**

We'll explain the importance of whole house audits and subsequent home improvements that can help make **existing** homes more comfortable, healthy, safe and efficient. *This class is offered twice. You only need to attend one.*

Instructor: Glenda Abney, EWC Manager • **Fee:** Free! Reservations Required.

Metal Project: Luminaries • **Saturday, June 16 • 3 to 6 p.m.**

Make recycled Tin Luminaries with us! Please bring your own hammer and pattern ideas.

Instructor: Katy Mike Smaistrila, EWC Education Coordinator • **Fee:** \$40 MBG member, \$45 nonmember

How to Register: Call (314) 577-0220 or email earthways.center@mobot.org to register. **Reservations required for all classes!** All classes listed above will take place at the EarthWays Center located at 3617 Grandel Square, St. Louis. Parking is on the street at meters, bring some quarters.

Other MBG Programs

MBG's Illinois Appreciation Week • April 27 - May 2

2 for 1 admission to MBG and more! EWC staff will be at a kickoff for this event held May 24 from 5:30 to 8 p.m. at Eckerts in Belleville. Check the [Garden's website](#) for details.

Shaw Nature Reserve Spring Wildflower Sale • Saturday May 12 • 9 a.m. to 4 p.m.

Leading local nurseries will offer the widest selection of native plants in the St. Louis area. Talk to the experts and try some of these low-maintenance gems in your garden – its the best event in the area to shop for native wildflowers!

Free admission. FOR MORE INFORMATION, please call Shaw Nature Reserve at (636) 451-3512.

Featured Organization

Think Globally, Eat Locally. How local can you get? How about home plate – your dinner plate, that is. Did you know that the average piece of food travels more than 1500 miles before finding its way to your plate? By purchasing local foods, you support local farms, cut down on the fossil fuels used for transportation, and eat the healthiest and best tasting fare. The best news yet is that eating locally is easy in St. Louis during the summer months. **The greater St. Louis region supports several thriving farmers markets from Soulard to Kirkwood.** Here are some tips for a successful trip to the farmers market:



A woman makes purchases of fresh vegetables at a local farmers market. Photographer: Julia Feder.

• **Ensure that the food you buy truly is locally grown.** Ask the farmer questions about their farm. Where are they located? How long have they been farming? If the stand features products not native to Missouri (such as bananas, avocados, and citrus) the seller is probably not a regional farmer!

• **Forge a relationship with the farmer.** Ask about how they grow their food. While organic is good, local is more sustainable. Most small-scale, local growers are using an integrative pest management (IPM) system. This means that they are combating pests utilizing many techniques such as companion planting and attracting beneficial, predatory insects to their fields. If these farmers are using pesticides, it is usually through localized application, rather than intense spraying operations. If you are concerned, don't be afraid to ask.

• **Make the farmers market a habit – plan your week around a trip to the market.** Enjoy a cup of fair trade coffee and a leisurely stroll through the market. Once you start eating locally, you'll never go back!

Check out these great markets and others in the greater St. Louis region this summer:

Maplewood Farmers Market • Wednesdays, 4 to 7 p.m., beginning May 2

Schlafly Bottleworks • 7260 Southwest Avenue in Maplewood • (314) 241-2337 • www.schlafly.com/market.shtml

Tower Grove Farmers Market • Saturdays, 8:30 a.m. to 12:30 p.m., May 12 through October 27

Tower Grove Park, west of the Pool Pavilion, in the City of St. Louis • www.tgmarket.org/

Soulard Market • Saturdays, 6:00 a.m. to 5:00 p.m.

730 Carroll Street, Soulard, in St. Louis City • www.stlouis.missouri.org/citygov/soulardmarket/index.html

Monroe County: IL Farmers Market

Thursdays, 3 p.m. to dusk, beginning April 26 Ace Hardware parking lot in Columbia, IL

Saturdays, 8 a.m. to 11:30 a.m. beginning April 28 parking lot by the Courthouse in Waterloo, IL

EarthWays Center Volunteer Opportunities



EarthWays Center Seeks Volunteers to Learn and Teach GREEN.

This is a wonderful way to become more knowledgeable about sustainable living!

We have opportunities for volunteers to help with tours and special events on a monthly basis. The only requirement is four hours of your time every three months - we'll teach you the rest! An EarthWays shirt and name badge will be provided for regular volunteers when a one-day training is completed. **Our next training session will be in June 2007.** Come help make a difference!

Currently, we have a special need for individuals who are available on week days to guide tour groups and help with programs. Please contact us at: (314) 577-0220 or e-mail earthways.center@mobot.org today!

EarthWays Center Public Tours



3rd Saturday & Sunday each month

11 a.m. • Noon • 1 p.m. • 2 p.m.

Upcoming tour weekends:

April 21-22 - spend Earth Day at EarthWays Center!

May 19-20

June 16-17 - Great Green Adventures at EWC on June 16!

Admission: \$2 per person

Missouri Botanical Garden Members and Children Age 12 & Under Free

No reservations or advance ticket purchase needed for public tour weekends.

For more information on the EarthWays Home Public Tour Days and examples of things you can see here go to:

[EarthWays Home Public Tour Days](#)

Note: This historic building is not wheelchair accessible. EarthWays Center is located in the Grand Center arts district of mid-town St. Louis, not on the grounds of Missouri Botanical Garden. For a map to EWC, [click here](#)



Save The Date!

EarthWays Green Homes Festival and House Tour

Saturday and Sunday, September 29-30, 2007

It's our 6th annual celebration of energy-saving - and more! If you plan to build a new home, remodel, redecorate, or just change your light bulbs, you won't want to miss this gala gathering of green resources. New this year: a guided tour of several St. Louis Green Homes. Plus a full house of learning and fun, here at EarthWays Center.

EarthWays Center - 3617 Grandel Square - St. Louis, MO 63108 - (314) 577-0220

You are receiving this newsletter because you have subscribed during a visit to EarthWays Center or to our website. We hope you find this information useful! If you wish to unsubscribe, please email earthways.center@mobot.org and title your message "unsubscribe."